

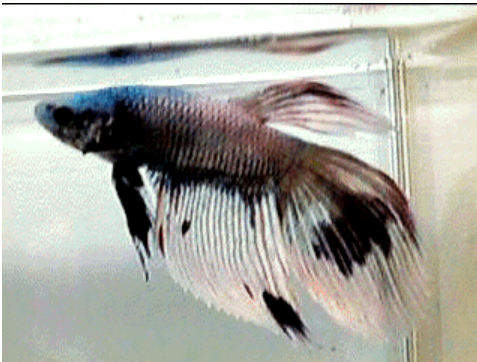


Sea Dwellers & Friends

Angola, IN

Ph: 260-316-3697

<http://www.sea-dweller.com>



Betta
Betta Splendens

Common Name: Betta

Scientific Name: Betta Splendens

Species Family: General , Gourami

Temperature: 78°F

Swimming Range: top

Adult Length: 3 - 3 1/4 inch

Feeding Habits: Prefers small live foods such as brine shrimp, blood worms, glass worms and tubifex worms. Frozen brine shrimp, plankton, beef heart, glass worms and blood worms. Freeze dried food will be accepted on occasion as well as flake food.

Compatibility : A single male may be kept in a community aquarium either by itself or with a couple of females. Keeping more than one male per aquarium is not recommended as they will fight and attempt to kill each other. Keep with similar sized fish as they will eat the smaller fish in the aquarium.

Habitat: Thailand-Cambodia, found in rice patty fields. Moderately decorate with live plants, rocks and driftwood.

Housing: Moderately decorate with live plants, rocks and driftwood. Allow 1 gallon of water per inch of fish within the aquarium.



Sea Dwellers & Friends

Angola, IN

Ph: 260-316-3697

<http://www.sea-dweller.com>

Breeding: The male has the long flowing fins and the female has very short round fins. The male will create a bubble nest at the top of the aquarium, and the eggs will develop in there until they hatch in about 24 hours.

Other notes:

Their bright colors are from breeding in captivity. They also have the ability to breathe air from the surface through their labyrinth, which acts like lungs.